

QUICK GUIDE

Unmanned Aircraft Regulations

OPEN CATEGORY



A1 'FLY OVER PEOPLE'

C0 <250g

Legacy <250g

LEGACY EXAMPLES

Mavic Mini
Mavic Mini 2
Tiny Whoop

A1 'FLY OVER PEOPLE'

-not intentionally

C1 <900g

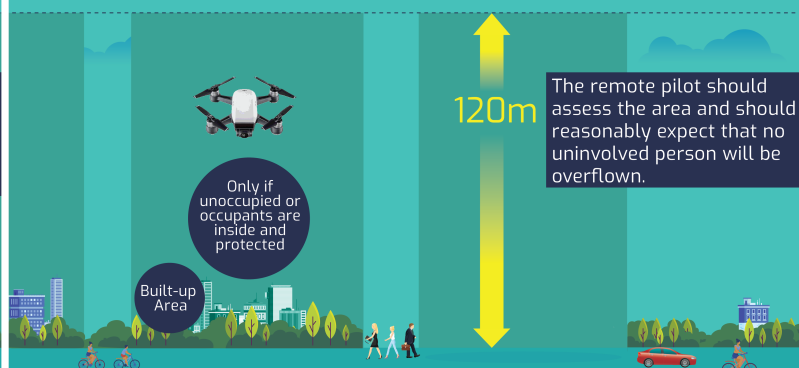
A1/T legacy <500g
until 31/12/22

CERT

A2
CofC

LEGACY EXAMPLES

Mavic Mini >250g
with prop. guards
Spark
Mavic Air 1



A2 'FLY CLOSE TO PEOPLE'

D

CERT

C2 <4kg in low speed mode

5m

C2 <4kg

30m

A2/T legacy <2kg until 31/12/22

50m

A2
CofC

LEGACY EXAMPLES

Mavic Air 2
EVO 2
Mavic 2 Pro

A3 'FLY FAR FROM PEOPLE'

C3, C4

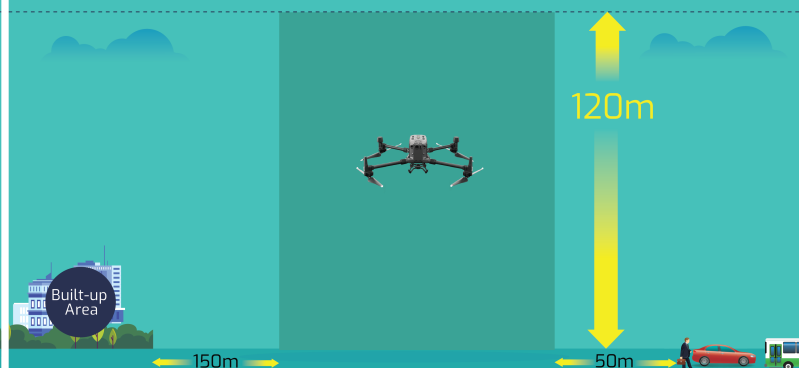
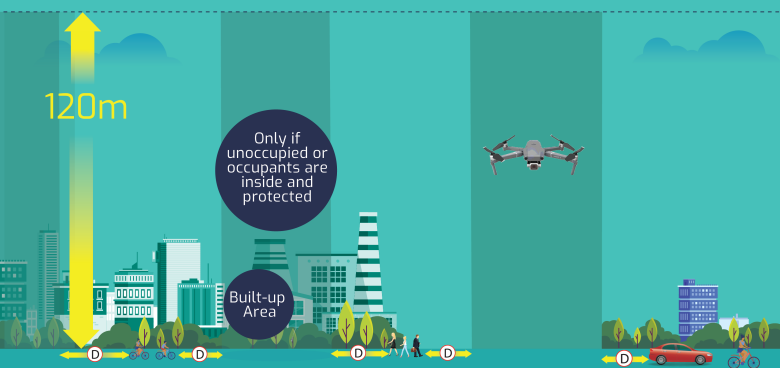
Max 25kg

>2kg & legacy >250g w/out A2 CofC

All legacy >250g after 31/12/22

LEGACY EXAMPLES

Inspire 2
M300
>2kg Homebuilt



- ✓ The shaded areas depict where unmanned aircraft may be flown - with the appropriate certification (if applicable).
- ✓ ANO 2016 article 241 always applies: 'A person must not recklessly or negligently cause or permit an unmanned aircraft to endanger any person or property'.
- ✓ CAA registration is required unless <250g without a 'sensor able to capture personal data' (eg a recording camera) or a toy.
- ✓ Unmanned aircraft must stay within visual line of sight.
- ✓ Built-up Area: 'An area substantially used for industrial, recreational, commercial or residential purposes'.

- ✓ Unmanned aircraft must never be more than 120m (400ft) from the closest point of the earth's surface.
- ✓ Must not fly within 30m horizontal distance of 'assemblies of people' ('gatherings where persons are unable to move away due to the density of the people present').
- ✓ Commercial flying requires EC785/2004 insurance (terrorism cover). (FPV UK insurance is not EC785/2004).
- ✓ Respect privacy and landowner restrictions, local by-laws etc.
- ✓ Follow-me mode is permitted up to a maximum distance of 50m from the remote pilot.